



The Drawingboard

Queens Chapter

New York State Society of Professional Engineers

March 2009

Volume 9, Number 3

In This Issue

- President's Message
- Meeting Information
- 2009 Engineering Expo
- NYSSPE / QC Legal Fund
- Executive Meeting Minutes
- Professional Services Directory
- Sponsors

Board of Directors

Chris Petallides, P.E.	President (718) 961-4342
George L. Tavoulareas, P.E.	1ST Vice Pres. (718) 894-7822
John Sgouros, P.E.	2ND Vice Pres. (718-) 956-3488
Jose Valasquez, P.E.	Treasurer (718) 323-0754

Secretary
[Tony Paolo](#)

Editor/Publisher
[Tony DiRuggiero](#)



President's Message

*By Chris Petallides, P.E.
President*

The original as well as the extended response deadlines for our pending law suit against the City of New York, **Mayor Bloomberg** and Commissioner of Buildings **Robert LiMandri** for violation of the NYS Education Law (due February 20th & March 12th, respectively) are now behind us without any response from the defendant(s). As of March 20th '09, however, the judge on the case should have received all documents for review and now has 60 days to act on our declaration of judgment. In the meantime, our Society (NYSSPE) is receiving nothing but praise for its law suit initiative and not only from the design professionals (PE's & RA's) but also from other responsible members of the community who are also helping to expand our Legal Fund with their ongoing contributions.



In the meantime, the NYC Department of Buildings (DOB) keeps introducing inadequately thought out changes to filing forms and procedures, apparently the result of pressure from City Hall, which, coupled with the newly adapted Building Code and ongoing changes to the Zoning Resolution, make it increasingly difficult for both the applicants and the DOB staff to keep up. As a veteran engineer told our State Society NYC V.P., **Tom Szekely**, PE, the other day, "things were better when they were worse."

Chapter membership, which bottomed out to about 120, last year is now showing signs of a slow reversal, thanks to the efforts of 1st VP, **George Tavoulareas**, PE and others. Now, more than ever, is the time to join NSPE, the professional society which represents all PE's, regardless of discipline and guards professional licensure with a passion, in order to ward off the dangers now lurking against our profession. We urge, therefore, all PE's to join NSPE as soon as possible; to help unlicensed engineers become licensed and to steer our best and brightest students toward the study of engineering. In this respect, are grateful to past chapter president, **Sal Galletta**, PE for his efforts re: Student Outreach Program, through our sister organization, the American Engineering Alliance (AEA).

(Continued Next Page)

Immediate Past Presidents

Brian Flynn P.E.	2006/2008 (718) 707-0416
Chris Petallides, P.E.	2004/2005 1998/2000 (718) 961-4342
John Zurita, P.E.	2002/2003 (718) 756-0320
Sal Galletta, P.E.	2000/2002 (212) 788-8199
Joel Miele, Jr., P.E.	1996/1998 (718) 894-2222
Chris Sideris, P.E.	1994/1996 (718) 224-9091
Robert Lo Pinto, P.E.	1990/1992 (718) 746-7122

Many thanks also go to immediate past president, **Brian Flynn**, PE, for keeping the Chapter's website updated and interesting; to treasurer, **Jose Velasquez**, PE, for keeping our financial books in order and to 2nd VP, **John Sgouros**, PE, for lining up the monthly meeting sponsors, in keeping with past tradition, in spite of the now tough economic times.

We look forward to seeing all of you at our next General Meeting, Thurs., March 26, 2009, 6:30PM at Fort Totten.

Upcoming Meeting Information

Our Next Chapter Meeting

Date: **Thursday March 26th, 2009 – 6:30 PM**

Sponsor: [Marvin Windows and Doors](#)

Presenter: Augustin Sed

Title: **Energy Efficient Windows**

Objectives: variables that determine a windows energy efficiency:

- U-factors
- Solar Heat Gain and Loss
- Visible Transmittance
- Air Infiltration
- Frame Construction, and
- Glazing Options

Directors 2008-2010

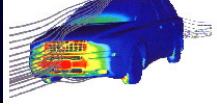
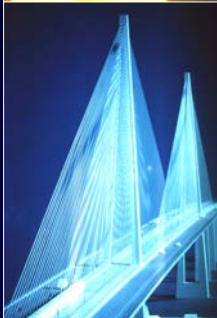
Tom Campagna, PE	(718) 423-7924
Gregory Georges, PE	(718) 274-4800
Mike Karantinidis, P.E.	(718) 482-0800
John Kepertis, P.E.	(718) 343-6989
Saeed Ainechi, P.E.	(718) 544-7878
Issam Aburafeh, P.E.	(718) 276-9200

Location:

422 Weaver Ave., Fort Totten, New York

Directors 2008-2009

James Manoussoff, P.E.	
Bernard Haber, P.E.	(718) 224 2146
Eliot Shapiro, P.E.	(516) 791-2300
Xenophon Cavaris, P.E.	(516) 752-1687
Peter Boudouvas, P.E.	(212) 594-4340
Robert Weiner, P.E.	



Discover Engineering!

At

Westchester Community College

Valhalla, New York in Westchester County

ENGINEERING

EXPO

Sunday March 29, 2009

11:00 am – 4:00 pm

FREE ADMISSION!

For more information visit

Be An Engineer.org

Lower Hudson Valley
ENGINEERING



The Lower Hudson Valley Engineering Expo is a project of The Foundation for Engineering Education, Inc. (FEE). FEE is a NYS Chartered 501(c)(3) corporation. Donations are tax deductible to the maximum extent allowed by law. A copy of the latest annual report may be obtained, upon request, from The Foundation for Engineering Education, Inc., 385 Jordan Rd., Ste 6, Troy, NY 12180 or from the New York State Attorney General's Charities Bureau, Attn: FOIL Officer, 120 Broadway, New York, NY 10271

The Foundation for Engineering Education

Lower Hudson Valley Engineering Expo - P.O. Box 332 West Nyack, 10994

Rockland Review

FOR ROCKLAND AND BEYOND ...YOUR COMMUNITY-MINDED WEEKLY NEWSPAPER SINCE 1976

DECEMBER 26, 2008

Astronaut Terry J. Hart to be featured speaker at 6th Annual Lower Hudson Valley Engineering Expo



WEST NYACK, N.Y.

Terry J. Hart, a retired astronaut, Air Force fighter pilot and Bell Labs engineer, will be the marquee speaker at the sixth annual Lower Hudson Valley Engineering Expo. The event is set for Sunday, March 29, 2009, from 11 a.m. to 4 p.m. at Westchester Community College in Valhalla, N.Y.

The Expo's mission is to introduce middle and high school students and their families to educational opportunities and career options in the engineering industry. Leading engineering colleges from throughout the Northeast and top engineering firms from across the Hudson Valley will have interactive displays and exhibits at this free event.

"We are extremely pleased to have a person of Terry Hart's stature agree to join us at the Expo," said Malcolm G. McLaren, president and CEO of McLaren Engineering Group, a primary sponsor of the event. "His real-life exploits as an astronaut have captured the imagination of the American public and by sharing his experience and knowledge, we hope young science and math students

will be inspired to pursue a career in engineering."

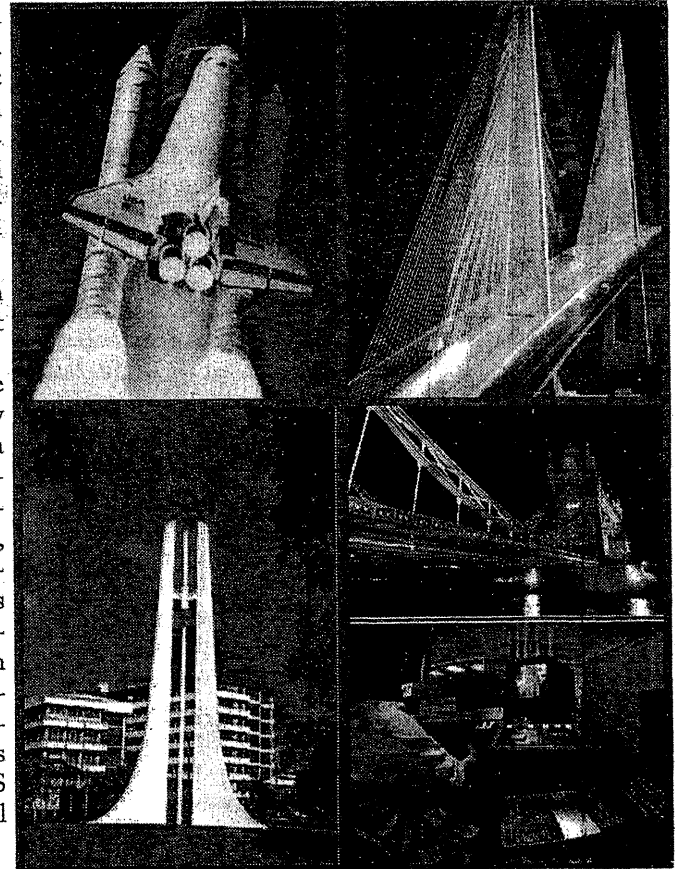
Hart was part of the first group of space shuttle astronauts, known as the "Thirty-Five New Guys," chosen by NASA in 1978. He and four others manned the Challenger on NASA's 11th shuttle mission in April 1984, logging 168 hours in orbit above the earth. He and his crew were credited with being the first astronauts to repair a satellite from the shuttle.

Hart put his engineering career at Bell Laboratories on hold for four years to be an Air Force fighter pilot and for six years to be a NASA astronaut. After retiring as an astronaut in 1985, he continued a prosperous career in the telecommunications industry. He had received two patents while employed at Bell Labs,

working on electrical and mechanical design for a variety of electronic power equipment used in the Bell System. He currently teaches courses on aircraft design and performance at Lehigh University, his alma mater.

For more information about the expo, visit www.BeAnEngineer.org.

ABOUT EXPO: The Lower Hudson Valley Engineering EXPO, a project of The Foundation for Engineering Education Inc. (501(c)(3)), is a collaboration of several engineering societies in the Hudson Valley including the American Society of Civil Engineers, Institute of Electrical and Electronics Engineers and the NYS Society of Professional Engineers.



QUEENS COUNTY CHAPTER

OF

THE NEW YORK STATE SOCIETY OF PROFESSIONAL ENGINEERS

(Member: National Society of Professional Engineers - NSPE)

47-15 Marathon Pkwy, Little Neck Hills, NY 11362-1255

Tel. No. (718) 961 4342

Fax: (718) 321 3929

e-mail: PetallidesPE@aol.com

website: www.nspequeens.org

OFFICERS:

CHRIS PETALLIDES, PE
President

GEORGE TAVOULAREAS, PE
1st Vice President

JOHN SGOUROS, PE
2nd Vice President

JOSE VELASQUEZ, PE
Secretary/Treasurer

November 20, 2008

Dear Colleague,

The Queens Chapter – NYSSPE is soliciting contributions from Engineers and Architects in the NY area to help fund a lawsuit by the NY State Society of Professional Engineers (NYSSPE) against the City of New York. As you probably already know, the NY City Council recently passed a law changing the City Charter, at the insistence of Mayor Bloomberg, which removed the licensure requirement from the Commissioner of the Department of Buildings. The new law now states that the Buildings Commissioner need not be licensed. Presently, an unlicensed lay person is Buildings Commissioner.

The Queens Chapter is leading the fight in the NY Metropolitan area AGAINST the Mayor's irresponsible actions which endanger the public's health, safety and welfare while undermining and diminishing both the Engineering and Architectural professions.

The Queens Chapter leadership is asking all Engineers and Architects to contribute to a legal fund which will support the NYSSPE legal suit against the City of New York. Please make whatever contribution is within your means.

It's about time we stand up for our Profession and the people of New York!

Suggested contributions:

\$1,000 _____ \$ 750 _____ \$ 500 _____ \$ 250 _____ \$ 100 _____ Other _____

Please make checks payable to: "Queens Chapter – NYSSPE" Memo: "Legal Fund"

Mail to:

Jose A. Velasquez, P.E. - Treasurer
Queens Chapter – NYSSPE
130-08 122 Street (2nd Fl.)
South Ozone Park, NY 11420

Professional Services Directory

The Queens Chapter of the NYSSPE recommends the advertisers listed below for their respective products or services. However, the Queens Chapter does not take responsibility for these advertisers products or services.



Miles Fisher, P.E.

Fire and Building Code Services, Inc.
10 East Merrick Road, Suite 308
Valley Stream, New York 11580

Tel: 516-256-7780, Ext. 201
Fax: 516-256-7783
Cell: 516-779-7295

E-mail: miles@firecodeservices.com

SHAPIRO ENGINEERING, P.C.

ENVIRONMENTAL ENGINEERING • ENVIRONMENTAL LABORATORY

ELLIOT J. SHAPIRO, P.E.

Chairman, Board of Directors

ROBERT A. LO PINTO, P.E.

President

181 SOUTH FRANKLIN AVE., SUITE 305
VALLEY STREAM, NEW YORK 11581-1101

516 791-2300 (FAX) 516 791-0782

Email: shapiroengineers@worldnet.att.net

(718) 274-4800
FAX (718) 274-4849

VALUE ENGINEERING
Consulting, P.C.
Engineers and Designers

GREGORY G. GEORGES, P.E. 30-05 30th AVENUE
PRESIDENT LONG ISLAND CITY, NY 11102

ISSAM M. ABOURAFEH, P.E.
PROFESSIONAL ENGINEER



ARCHITECTS ENGINEERS PLANNERS

CROSS ISLAND PLAZA
133-33 BROOKVILLE BLVD., SUITE 208
ROSEDALE, NY 11422

EMAIL: ISSAM@IMA-ARCHITECTS.COM TEL (718) 276-9200
FAX (718) 276-0722

Instant Microfilm Associates Inc

*Microfilming*Copies of Plans*
*PC Filing*DOB Forms*Typing
*Notary*Facsimiles*St Obstruction Bonds*
Engineering & Architectural Services






123-23 82 Avenue Kew Gardens NY 11415
Tel: 718 268 8600 Fax: 718 793-5247

SIDERIS ENGINEERS P.C. *Consulting Engineers*

217-22 Northern Boulevard
Bayside, New York 11361
Tel 718-224-9091 Fax 718-224-9143

Chris M. Sideris, P.E. Filolaos T. Kefalas, P.E.
T.C. Sideris, P.E. (1923-2005)

The Queens Chapter of the NYSSPE recommends the advertisers listed below for their respective products or services. However, the Queens Chapter does not take responsibility for these advertisers products or services.

<p>Tel: 718-544-5105 Fax: 718-544-0031</p> <p>JOSEPH HOROWITZ <i>Professional Engineer</i></p> <hr/> <p>ENVIRONMENTAL CONSULTING ENVIRONMENTAL PROJECT MANAGEMENT</p> <p>76-06 137TH Street Flushing, NY 11367</p>	<p> A&A Consulting Engineers, P.C.</p> <p>SAM S. AINECHI, M.S., P.E. Licensed Professional Engineer</p> <p>125-10 Queens Blvd. Suite 318, Silver Towers Kew Gardens, NY 11415</p> <p>Tel. 718-544-7878 Fax: 718-544-7884</p>
<p>Chris Petallides, P.E., N.S.P.E. CONSULTING ENGINEER</p> <p>TEL: 718 961 4342 FAX: 718 321 3929 EMAIL: PetallidesPE@aol.com</p> <p>47-15 Marathon Pkwy. Little Neck Hills, N.Y. 11362</p>	<p>Tel/Fax: (718) 323-0754 Cell: (917) <u>860-6957</u> E-Mail: JAVBINTGRO@AOL.COM</p> <p>130-08 122nd, Street 2nd Fl. South Ozone Park, NY 11420</p> <p>Jose A. Velasquez, P.E. Master of Civil Engineering Master of Economics New York State Licensed Professional Engineer</p> <ul style="list-style-type: none"> • Consultant • Building Inspections • Certificates of Occupancy • Engineering Reports • Permits & Alterations • Structural Design • Legalizations • Removal of Violations
<p> N.Y.S. P.E. License # 069956 Cell (347) 528-6038</p> <p>Brian E. Flynn <i>Professional Engineer</i> Home & Building Inspections</p> <p>78-66 79th Place Glendale, NY 11385</p> <p>Phone (718) 894-7822 Fax: (718) 894-7833 BEFlynnPE@aol.com</p>	<p> HERMES/Hephaistos</p> <p><i>Manufacturer of c-joists, metal studs & accessories</i></p> <p><i>A Division of Hephaistos Building Supplies</i></p> <p>Warehouse: 24-02 37th Avenue Astoria, NY 11101 Office: 34-01 Broadway Astoria, NY 11106</p> <p>Tel: (718) 482-0800 Fax: (718) 482-0581 Michael Karantinidis P.E. President</p>
<p>INTERNATIONAL GEOTECHNICAL/STRUCTURAL LABORATORIES INC.</p> <p> www.internationalgeo.com GEOTECHNICAL & ENVIRONMENTAL TESTING</p> <p>MICHAEL KARANTINIDIS, P.E. STRUCTURAL ENGINEER</p> <p>OFFICE: 31-87 34TH STREET, ASTORIA, NY 11106 TEL: (718) 726-1527 FAX: (718) 956-0274 info@internationalgeo.com</p>	<p>SIDDIQUE ENGINEERING, P.C. <i>Professional Engineering Services</i></p> <p>MAHATAB ALAM SIDDIQUE, P.E., N.S.P.E</p> <ul style="list-style-type: none"> • Engineering Reports • MEP Consulting Services • Engineering Cost Estimate • Steam Piping Stress Analysis • Shop Drawings/Piping & Sheet Metal • Legalizations • Removal of Violations • Permits & Alternations • Certificate of Occupancy <p>Tel: (718) 737-4501, Fax: (718) 657-2447 140-23 Queens Boulevard MSIDD43390@AOL.COM Jamaica, New York 11435</p> <p> National Society of Professional Engineers*</p>


The Queens Chapter of the NYSSPE recommends the advertisers listed below for their respective products or services. However, the Queens Chapter does not take responsibility for these advertisers products or services.

 <p>Building Asbestos Inspections</p> <p>RAO PMP Asbestos Investigator</p>  <p>80-50, 252nd Street Bellerose, NY 11426</p> <p>917-282-9223 718-343-2758 raoinspections@hotmail.com</p>	 <p>Z. S. ENGINEERING, P.C. 99 TULIP AVENUE FLORAL PARK, NY 11001 PHONE: (516) 328-3200 FAX: (516) 328-6195 E-MAIL: staszewski@zsengineering.com</p> <p>ZYGMUNT STASZEWSKI, PE, FSFPE PRESIDENT NY LICENSE #63367 CT LICENSE #17587 NICET III</p>
 <p>barry j. bank, p.e. consulting engineer 123-40 83rd avenue • suite 1L kew gardens, n.y. 11415 tel. no. (718) 577-9066 fax no. (718) 577-9067 bbankpe@optonline.net</p>	<p>Office of Richard Berkenfeld consulting engineers</p> <p>richard g. berkenfeld, p.e. principal</p> <p>175 great neck road great neck, n. y. 11021</p> <p>(516) 487-0414 fax (516) 487-0417</p> <hr/> <p>Building Department ASBESTOS INSPECTIONS 53-31 210th Street Bayside, NY 11364</p> <p>John Zurita, PE Asbestos Investigator (917) 292-7263 (718) 428-2467 jzurita@verizon.net</p> 

Sponsors

The Queens Chapter of the NYSSPE recommends the advertisers listed below for their respective products or services. However, the Queens Chapter does not take responsibility for these advertisers products or services.

Material Engineering and Services
Please Patronize Our Sponsors



LB&C
when it really matters


Attorneys at Law

L'Abbate, Balkan,
Colavita & Contini,
L.L.P.

Martin A. Schwartzberg
Partner

1001 Franklin Avenue
Garden City
New York 11530

T: 516.294.8844
F: 516.294.8202
mschwartzberg@lbclaw.com
www.lbclaw.com



540
Ulster Landing
Road,
Kingston
New York
12401

Telephone
(845) 336-8880
Facsimile
(845) 336-8962

LHV
PRECAST
INCORPORATED

Adam Baker
Sales

PURVEYORS
of QUALITY
PRECAST
CONCRETE
Custom
& Standard Fabrication

lhvprecast@worldnet.att.net

Attention Sponsors/ Advertisers: If you would like your card updated please contact the editor. Cards can be dropped off at the next meeting, mailed, faxed, scanned and emailed or text can be substituted in lieu of a card.